

Marcel Breuer

The Stillman House

Marcel Breuer

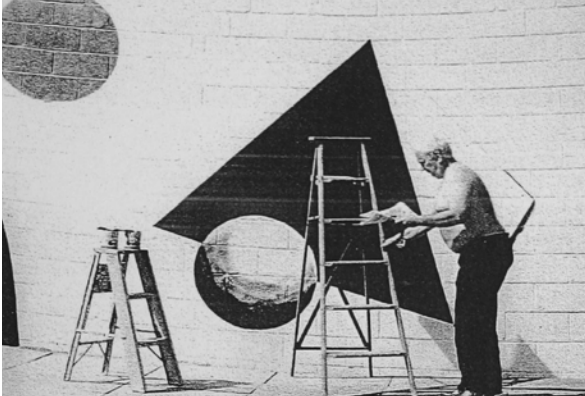


Marcel Breuer
The Stillman House
Litchfield, Connecticut

Klemm Real Estate is offering Marcel Breuer's historic Stillman House, 1950. A modern masterwork of design and artful collaboration between Marcel Breuer, Alexander Calder and Xanti Schawinsky. This represents a rare opportunity to acquire an architectural masterpiece by one of the world's most important modernists.

Privately nestled on three acres within the historic borough of Litchfield, Connecticut, 1 hour 45 minutes from Manhattan, the listing offers a main house, a guest house, and a pool which *Architectural Digest* characterized last year as possibly "the best pool in New England." The Breuer-designed pool features a floating staircase and a landing platform in the likeness of Breuer's Whitney Museum entrance (recently renamed The Met Breuer), a complete 360° infinity edge which factors among the earliest gunite pools in Connecticut, and a 22-foot mural wall designed purely for the creative expression of legendary artist and sculptor, Alexander Calder, who was commissioned to paint it on site in 1953 by the Stillman family.

Cited for preservational integrity by Docomomo U.S. and The Connecticut Trust for Historic Preservation in 2014, the Stillman House features prominently within Breuer's architectural career and remains as futuristic and inspiring today as it did in 1950 as the Litchfield town's first modern. Featuring Breuer's signature use of glass, color, and natural materials, the main house has two living areas, four bedrooms and two baths while the guest house offers a second full kitchen, another bath, garage, and a large sunken living area with 13-foot ceilings and wall-to-wall glass. The main house and the guest house overlook the pool experience and acres of meadow to a private rolling hillside and Litchfield's Land Trust of nature preserves.



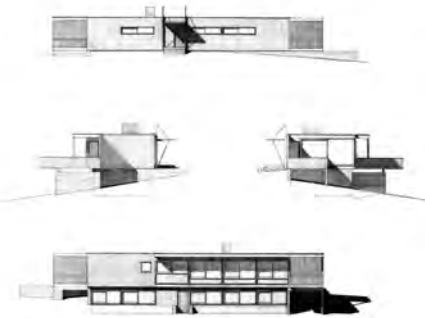
Alexander Calder
painting pool mural, 1953

Documentation on the Stillman House is maintained by the Smithsonian's Archives of American Art and Syracuse University, and the house has been featured in books and publications all over the world, ranging from the cover of *Interiors* (October 1953) to *Architectural Digest* (August 2014) to the upcoming issue of *Departures* (July/August 2015). The home's restoration lasted four years, extensively leveraging archived drawings and photo material. The current owners purchased the home directly from the Stillman family in 2009.

In addition to being listed by Klemm Real Estate, Klemm is proud to announce that the Stillman House has been chosen for Wright's Modern Masterworks event this fall, a prestigious distinction in recognition of the home's artistic and architectural significance.

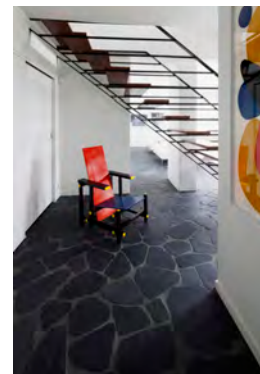
Listing price: \$2,495,000

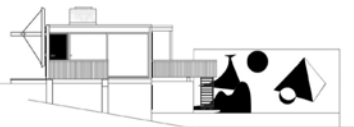
For further information please contact:
Graham Klemm, President, Klemm Real Estate
860 488-6635 / g@klemmrealestate.com





For Immediate Release
June 8, 2015





About Klemm

Klemm Real Estate was established in 1986 and has built a reputation both nationally and internationally as the #1 leader of luxury property sales and marketing throughout Litchfield County, Connecticut. Klemm serves all 26 towns and villages, as well as adjacent areas in New York, from our offices in Washington Depot, Litchfield, Lakeville, Roxbury and Woodbury. Our highly productive staff is comprised of 40 seasoned real estate professionals.

About Wright

Wright is the premier auction house specializing in modern and contemporary design. Since its founding in 2000, Wright has handled more than 40,000 lots across the spectrum of 20th and 21st century design. Based in Chicago and New York in the historic Parke-Bernet building at 980 Madison, the company was founded and is run by Richard Wright along with a group of creative and innovative specialists who have pioneered whole fields of collection, championed architecture at auction and presented fine art with dependable results, cultivating an illustrious place within the auction industry. Wright is also a leading figure in direct and private sales of art and design.