



KLEMM REAL ESTATE

COME LET US SHOW YOU!



PREMIUM & PRIVATE BROKERAGE

THE ONLY LITCHFIELD COUNTY INTERNATIONAL PROPERTY AWARD WINNER YEAR AFTER YEAR 2003-2017



NEW PRESTON

Renovated Riverfront Vintage Cottage. 3 Bedrooms. 3 Fireplaces. Antique Beams & Floors. Heated Studio. Waterfall. Small Pond. 0.39± Acres. **\$595,000. Maria Taylor. 860.868.7313.**



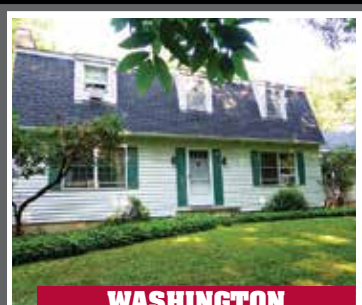
BETHLEHEM

Builder's Own Colonial. 4 Bedrooms. 2 Fireplaces. In-law Potential. Large Deck. Stonewalls. Distant Views. 3.12± Acres. **\$497,777. Sindy Butkus. 203.263.4040.**



ROXBURY

Shingle-style House. 3 Bedrooms. 4 Fireplaces. Wraparound Porch. Pool. Professional Landscaping. Mature Plantings. Gardens. 3.54± Acres. **\$975,000. Maria Taylor. 860.868.7313.**



WASHINGTON

Private Cape. 3 Bedrooms. 2.5 Baths. Fireplace. Opposite Shepaug River. Nature Lover's Paradise. 4.17± Acres. **\$495,000. Beverly Mosch. 860.868.7313.**



WASHINGTON

Commercial Opportunity with Residential Potential. c1929 Colonial. 2,500sf. 6 Office Units. Wood Floors. Central Location. **\$450,000. Peter Klemm. 860.868.7313.**



BETHLEHEM

Historic Georgian Farmhouse. 4 Bedrooms. 5 Fireplaces. Spacious Rooms. Large Barn. Pond. Breathtaking Views. 7.02± Acres. **\$425,000. Sindy Butkus. 203.263.4040.**



PRICE IMPROVEMENT

WASHINGTON

Storybook Cottage. 2 Bedrooms. Stone Fireplace. Vaulted Ceilings. Porch. Private Location. 2.14± Acres. **\$324,900. Tim Tierney. 860.354.3263.**



OAKVILLE

Fully Rented 3 Unit Multi-Family. Detached Garage. Storage Space. Private Yard. Great Location. Near Public Bus Route. **\$239,900. Sindy Butkus. 203.263.4040.**



PRICE IMPROVEMENT

GOSHEN

Tyler Lake Jewel. 1 Bedrooms. 1 Bath. Fireplace. 1-car Attached Garage. All Furnishings & Tools Included. 0.16± Acres. **\$119,900. Cleve Fuessenich. 860.567.5060.**

END OF SUMMER SALE



NEWTOWN

Vintage Compound. Renovated & Expanded Farmhouse. Guest Cottage. Barn/Caretaker's Apartment. Outbuildings. Open Pasture. 27± Acres. **\$875,000. Sallie Smith. 203.263.4040.**



PRICE IMPROVEMENT

ROXBURY

Light & Bright Colonial. 4-5 Bedrooms. 4.5 Baths. Fireplace. Pool. 2-car Garage. Useable Land. Great Location. 2.34± Acres. **\$849,000. Graham Klemm. 860.868.7313.**



PRICE IMPROVEMENT

ROXBURY

Country Farmhouse. 4 Bedrooms. Fireplace. 2 Gas Stoves. Wraparound Porch. Bluestone Patio. Pond. Gardens. 3± Acres. **\$799,000. Maria Taylor. 860.868.7313.**



ROXBURY

Private Retreat. 4-5 Bedrooms. Fireplace. Pool. Pond. Brook. Professional Landscaping. 90 Minutes to NYC. 3.02± Acres. **\$795,000. Sally Gorman. 860.354.3263.**



LITCHFIELD

Antique Home in Milton Historic District. 4 Bedrooms. 3 Fireplaces. 4 Baths. Many Original Features. 2± Acres. **\$795,000. Cleve Fuessenich. 860.567.5060.**



BRIDGEWATER

Stylish In-town Colonial. 4 Bedrooms. 2 Fireplaces. Fully Furnished. Media Room above 2-car Garage. Pool. Open Yard. 1.09± Acres. **\$750,000. Peter Klemm. 860.868.7313.**

#1 For Selling & Renting Fine Country Properties!

KLEMM REAL ESTATE Inc

Litchfield County's Premier Brokers

75% MARKETSHARE
All Sales Countywide
Over \$4m YTD*
*Source: SmartMLS + Klemm Private Sales 1-1-17 to 8-31-17

KLEMM REAL ESTATE

- 860.435.6789 Lakeville/Salisbury
- 860.567.5060 Litchfield
- 860.354.3263 Roxbury
- 860.364.5993 Sharon
- 860.868.7313 Washington Depot
- 203.263.4040 Woodbury

Local People/Worldwide Connections

klemmrealestate.com



klemmland.com

Klemmrentals.com